



# INTERNATIONAL ROLEX REGATTA 2009



## SAILING INSTRUCTIONS AND APPENDIX A St. Thomas, U.S. Virgin Islands

March 27 - 29, 2009



► **SAILING INSTRUCTIONS**

► **1 - RULES**

1.1 - The regatta will be governed by the rules, as defined in The Racing Rules of Sailing (RRS) 2009 - 2012.

1.2 - The Caribbean Sailing Association (CSA) rating Rule. Crew limitations for CSA classes will be in accordance with the CSA Rating Rule. CSA Rating information can be found at [www.caribbean-sailing.com](http://www.caribbean-sailing.com).

1.3 - The 2009 IRC Rules, Parts 1, 2 and 3. Crew limitations for IRC Classes will be the number of crew listed on the IRC Certificate, plus one. IRC Rating information can be found at [www.rorcrating.com](http://www.rorcrating.com).

1.4 - Multihull Advisory Committee for multihull classes.

1.5 - Portsmouth Yardstick for Beach Cats.

1.6 - For all classes, except Beach Cats, the minimum number of crew shall be three.

1.7 - Minimum safety requirements found in Appendix A of the Notice of Race.

1.8 - Every crew member is required to sign and every boat shall file, the Disclaimer and Waiver of Media Rights form provided at registration.

► **2 - BOAT IDENTIFICATION**

2.1 - The organizing authority will assign bow numbers to designated classes. The numbers will be available at registration. These numbers shall be affixed to both the port and starboard sides in the following manner: the leading edge of the forward number shall be 20 inches aft of the stem and 3 inches below the deck. The leading edge of the aft number shall be 3 inches aft of the aft edge of the forward number and 3 inches below the deck. All bow numbers shall be on a contrasting background.

2.2 - Event stickers and "Rolex" flags will also be supplied and shall be displayed during the

Regatta. The "Rolex" flags shall be prominently displayed from the backstay or near the stern of the boat approximately 7 feet above the deck at all times while racing. Beach Cats and cruising class boats are not required to carry "Rolex" stickers. The "Rolex" stickers shall be approximately 10 inches aft of the bow numbers and 6 inches below the deck. Boats failing to display event stickers, "Rolex" flags or bow numbers are subject to protest by the Race Committee only. This changes RRS 60.1.

► **3 - NOTICES TO COMPETITORS**

Notices to the competitors will be posted on the Official Notice Board located at St. Thomas Yacht Club, Cowpet Bay and Yacht Haven Grande marina office.

► **4 - CHANGES TO SAILING INSTRUCTIONS**

4.1 - Any change to the Sailing Instructions will be posted before 0800 on the Official Notice Board on the day it will take effect, except that any change to the schedule of races will be posted by 1800 on the day before it will take effect.

4.2 - Oral instructions may be given on the water. In the event of oral instructions the Signal Boat will display code flag Lima and give instructions as boats come within hail of the Signal Boat, in addition the Race Committee will broadcast the instructions and intentions of the Race Committee on the designated VHF channel.

► **5 - SIGNALS MADE ASHORE**

5.1 - Signals made ashore will be displayed on the flagpole at St. Thomas Yacht Club.

5.2 - When flag AP is displayed ashore, no warning signal will be made less than 60 minutes after the AP is lowered. This changes Race Signals.

► **6 - SCHEDULE OF RACES**

6.1 - Races are scheduled on March 27, 28 & 29, 2009.

6.2 - Classes sailing in each of the race areas will be posted on the Official Notice Board(s) by 1800hr Thursday March 26, 2009.

6.3 - The scheduled time for the first warning signal for each race day is 1000hr.

6.4 - Courses to be sailed each day will be posted on the Signal Boat for their respective class.

6.5 - Day 1, Friday March 27 – It is our intention that IC24s will sail multiple W/L courses on the Jersey Bay Circle, Cruising Class(es) and Multihulls will sail one of the Buck Island Courses and all other classes will sail a combination of St. James Island and Dog Island Courses – as many as 4 races are planned.

6.6 - Day 2, Saturday March 28 – All classes are scheduled to sail 2 races. Race 1 will start from the Cow & Calf starting area and finish in Charlotte Amalie Harbor. Race 2 will start in Charlotte Amalie Harbor and finish in Cowpet Bay.

6.7 - Day 3, Sunday March 29 – Races for all classes will start from the Cow & Calf Starting area. A minimum of two races are planned for all classes. Classes will sail a combination of St James and Pillsbury Sound courses.

► **7 - CLASS FLAGS**

7.1 - Class flags will be flags designated in the starting sequence posted on the Official Notice Board by 1800 Thursday, March 26, 2008.

7.2 - Class flags will be distributed by the Race Committee at registration on March 26, 2008 and shall be conspicuously displayed from the backstay, or near the stern of the boat, at all times while racing.

► **8 - THE COURSES**

8.1 - The courses are included in Appendix A of these sailing instructions.

8.2 - Course designations will be displayed by the Race Committee Signal Boat no later than the warning signal for each class.

8.3 - When there is a gate, boats shall sail between the gate marks from the direction of the previous mark and round either gate mark.

► **9 - MARKS**

9.1 - Marks on distance courses shall be a combination of inflatable, and government marks or islands.

9.2 - Marks on W/L courses shall be inflatable marks.

9.3 - Change marks will have black bands.

9.4 - The Race Committee Signal Boat may be protected by a nearby inflatable limit mark, which shall rank as a starting mark. Boats shall not pass between a limit mark and the nearby committee boat when approaching the line to start. The area between the limit mark and the committee boat does not rank as an obstruction for the purposes of RRS 19 and 20.

► **10 - THE START**

10.1 - Races will be started in accordance with RRS 26.

10.2 - The starting line will be between a staff displaying an orange flag on the Race Committee Signal Boat and a nearby inflatable mark.

10.3 - A boat whose warning signal has not been made shall avoid the starting area.

10.4 - A boat starting later than five (5) minutes after her starting signal will be scored Did Not Start. (This changes RRS A4.1).

10.5 - In the event of an individual recall, the sail numbers, bow numbers or identification of any boat or boats that are OCS will be announced on the designated VHF channel. Failure of a boat to see or hear her recall notification, the timing and order of such hails, or the length of time it takes to make a notification on the VHF will not be grounds

for redress. (This changes RRS 29.1 and 62.1 (a)).

► **11 - CHANGE OF THE NEXT LEG OF THE COURSE**

A change of course after the start will be signaled before the leading boat has begun the leg. Any marks to be rounded after rounding the changed mark may be relocated to maintain the original course configuration. When in a subsequent change a change mark is replaced, it will be replaced by an original mark.

► **12 - THE FINISH**

The finishing line will be between a staff displaying a blue flag on a Race Committee Signal Boat and a nearby inflatable finishing mark.

► **13 - PENALTIES FOR BREAKING A RULE OF PART 2**

13.1 - A boat that may have broken a rule of Part 2 while racing may take a penalty at the time of the incident. Her penalty may be either pursuant to RRS 44.2 or RRS 44.3, with the following changes: Two-Turns Penalty RRS 44.2 is changed such that the penalty shall be one turn including one tack and one jibe that in all other respects complies with RRS 44.2. The Scoring Penalty RRS 44.3 shall not be fewer than two (2) places. All boats that have taken a Scoring Penalty in compliance with RRS 44.3 shall submit a written declaration on a form available at the Protest Desk. Submitting a written declaration within the protest time shall satisfy the requirement in RRS 44.3(a) to inform the Race Committee at the finish line. This changes rule 44.3(a).

► **14 - TIME LIMITS**

14.1 - Time limits are as follows:  
Racing Day1 and 2, the time limit will be three (3) hours for each race except Non Spinnaker Racing and large Multihulls whose time limit will be six (6) hours.

Racing Day 3, the time limit will be five (5) hours.  
14.2 - The time limit will be the number of hours stated, plus each boat's corrected time difference. Boats failing to finish in these time limits will be scored DNF. This changes RRS 35 and A4.

► **15 - PROTESTS, ARBITRATION AND REQUESTS FOR REDRESS**

15.1 - Protest forms are available at the Protest Desk at St. Thomas Yacht Club. Protests shall be delivered in writing within the protest time limit. The protest time will be posted at the Protest Desk.

15.2 - For each class the protest time limit is 60 minutes after its respective Race Committee Signal Boat reaches its dock or mooring.

15.3 - Protests will be heard as soon as possible at the St. Thomas Yacht Club after each days racing. Protest notices will be posted and heard in the approximate order of receipt. Failure of a party to appear at a protest hearing following the posting of protest notification will be considered as grounds for the Jury to proceed under RRS 63.3 (b).

15.4 - Any measurement disputes shall be filed by the end of racing on the first day of the Regatta with the jury.

15.5 - For protests involving a breach of a rule of Part 2 of the RRS, a short arbitration hearing will be offered prior to a jury hearing. This changes Part 5, Section B of the RRS.

15.6 - A party that accepts the arbitrator's opinion that they broke a rule of Part 2 will be assessed a 40% scoring penalty as computed by RRS 44.3 (c). The 40% scoring penalty shall not be less than four (4) places.

15.7 - For the purpose of RRS N1.4 (b) the time limit for a hearing by the jury composed in compliance with RRS N1.1, N1.2, and N1.3 is within one hour after the decision is announced.

15.8 - Decisions of the International Jury will be final as provided in rule 70.5.

► **16 - SCORING**

16.1 - A boat's series score will be the sum of all her race scores.

16.2 - One race will constitute a series.

► **17 - SAFETY REGULATIONS AND CHECK IN**

17.1 - All boats shall carry VHF radios capable of receiving communications from the Race Committee.

17.2 - Each boat shall check in with their Race Committee Signal Boat before the first warning signal of the day by sailing on a starboard tack past the stern of the Signal Boat and being acknowledged. Failure to check in with the Race Committee is subject to protest only by the Race Committee. This changes RRS 60.1 and 60.3.

17.3 - A boat that retires from a race shall notify the Race Committee as soon as possible.

17.4 - A boat or equipment may be inspected at any time for compliance with the safety requirements posted in the notice of regatta.

► **18 - RADIO COMMUNICATION**

The Race Committee will broadcast information to competitors as shown below. Other radio communications are limited to transmissions involving safety.

18.1 - Jersey Bay Circle and Buck Island Course designated VHF channel 71

18.2 - St. James Circle and Dog Island Course designated VHF channel 72

18.3 - Harbor and Cowpet Race designated VHF channel 72

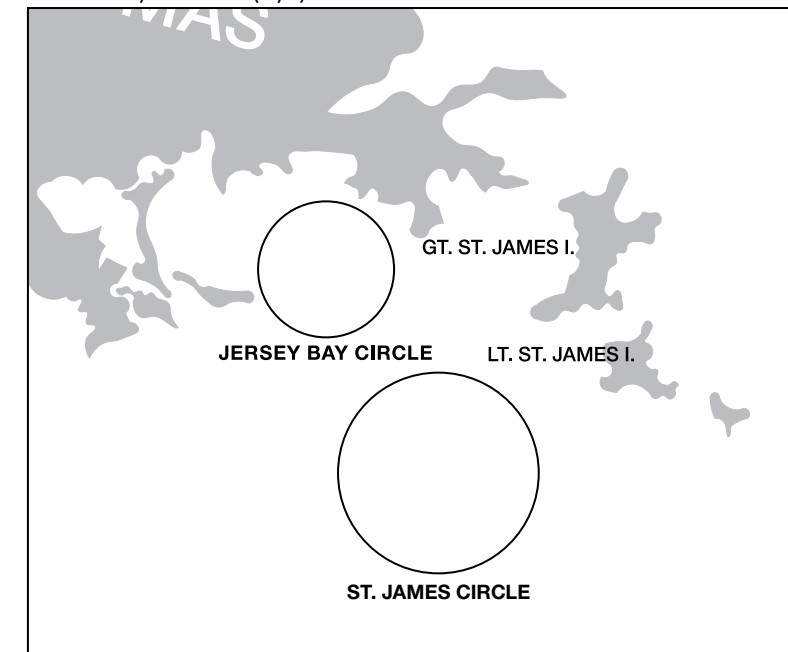
18.4 - Pillsbury Sound Race designated VHF channel 72

► **19 - PRIZES**

Prizes will be awarded at St. Thomas Yacht Club following the racing on Sunday, March 29, 2008.

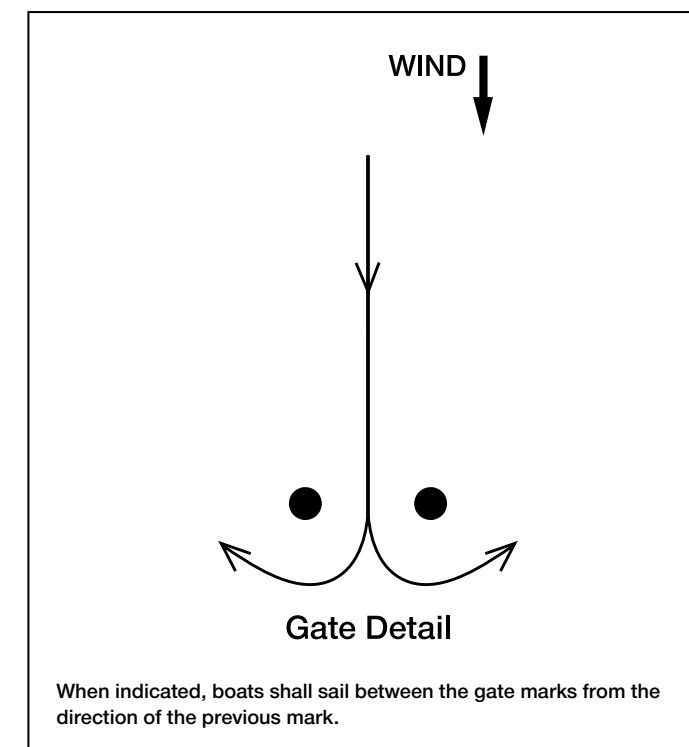
**APPENDIX A**

► **WINDWARD/LEEWARD (W/L) COURSE DIAGRAMS**



- Course WL 2: Start, mark 1, offset, Finish
- Course WL 2A: Start, mark 1A, offset, Finish
- Course WL 4: Start, mark 1, offset, Gate, mark 1, offset, Finish
- Course WL 4A: Start, mark 1A, offset, Gate, mark 1A, offset, Finish
- Course WL 6: Start, mark 1, offset, Gate, mark 1, offset, Gate, mark 1, offset, Finish
- Course WL 6A: Start, mark 1A, offset, Gate, mark 1A, offset, Gate, mark 1A, offset, Finish

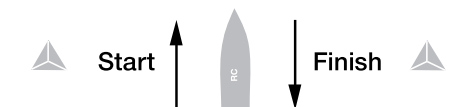
► The RANGE BEARING, and MARK DESIGNATION to the appropriate weather mark will be displayed from the Race Committee Signal Boat



Offset ● ● Mark 1A

Offset ● ● Mark 1

Gate ● ●





► **COURSE MARKS**

(all mark positions and distances are approximate)

MARK NAME	LATITUDE	LONGITUDE	BEARING	FROM	DISTANCE
Coculus Mark	18.17.8 N	64.55.0 W	232 deg T	Coculus Pt.	1.33 nm
Stragglers Mark	18.18.10 N	64.50.40 W	273 deg T	SW Pt. Stragglers Rocks	0.25 nm
Turtle Rock Mark	18.21.15 N	64.51.21 W	58 deg T	Turtle Rock	0.5 nm
Maria Bluff Mark	18.18.62 N	64.47.43 W	216 deg T	Maria Bluff	0.30 nm
Shark Island Mark	18.20.02 N	64.50.58 W	149 deg T	Lt. Shark Rock	0.29 nm

**NOTE:** In all course diagrams, "Mark" indicates an inflatable Rolex tetrahedron; "Buoy" refers to a government buoy. Consult a navigational chart for their latitude/longitude.

**START LINE:** Start between the staff displaying an orange flag on the Race Committee Signal Boat and nearby inflatable mark.

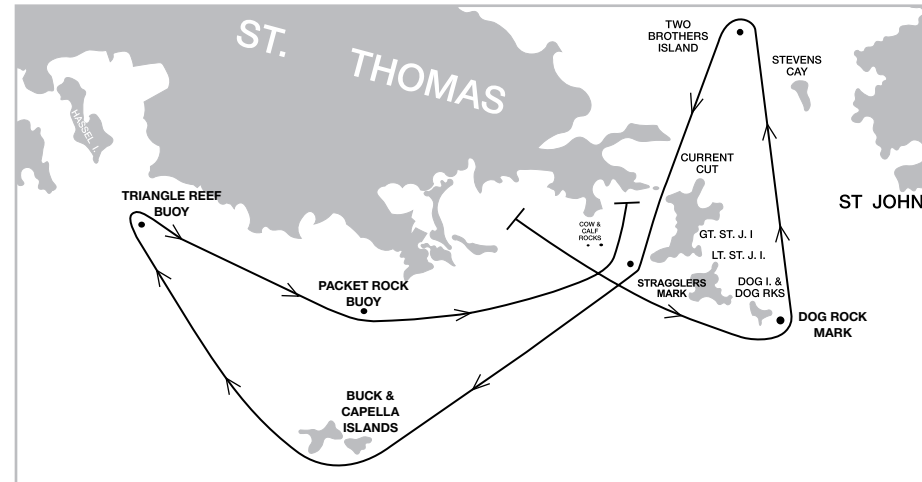
**FINISH LINE:** Proceed to finish between the staff displaying a blue flag on the Starboard Side of the Race Committee Signal Boat and a nearby inflatable mark.

**NOTE:** Boats not Starting or Finishing a race shall not cross the start-finish line.

► **COURSE DIAGRAMS**

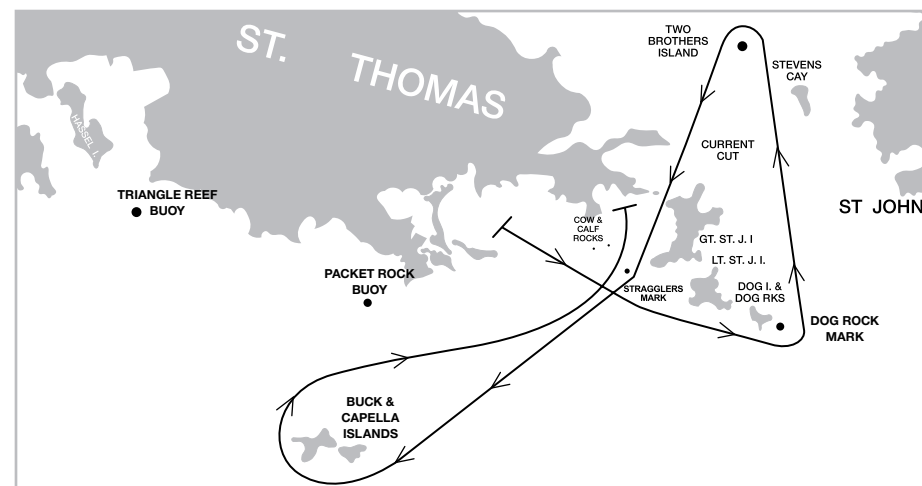
► **BI-1 Buck Island Course 1** (21.5 nm)

Jersey Bay Circle starting area  
 Start between the staff displaying an orange flag on the Race Committee Signal Boat and nearby inflatable mark.  
 Leaving Stragglers Mark to Port, proceed to Dog Rock Mark leaving it to Port.  
 Proceed to Two Brothers Island, leaving it to Port. Leaving Current Cut Rock to Starboard, proceed through Current Cut to Buck & Capella Islands leaving them to Starboard.  
 Proceed to Triangle Reef buoy leaving it to Starboard.  
 Proceed to Packet Rock buoy leaving it to Port.  
 Leaving Cow and Calf Rocks to Port, proceed to Finish in Cowpet Bay.

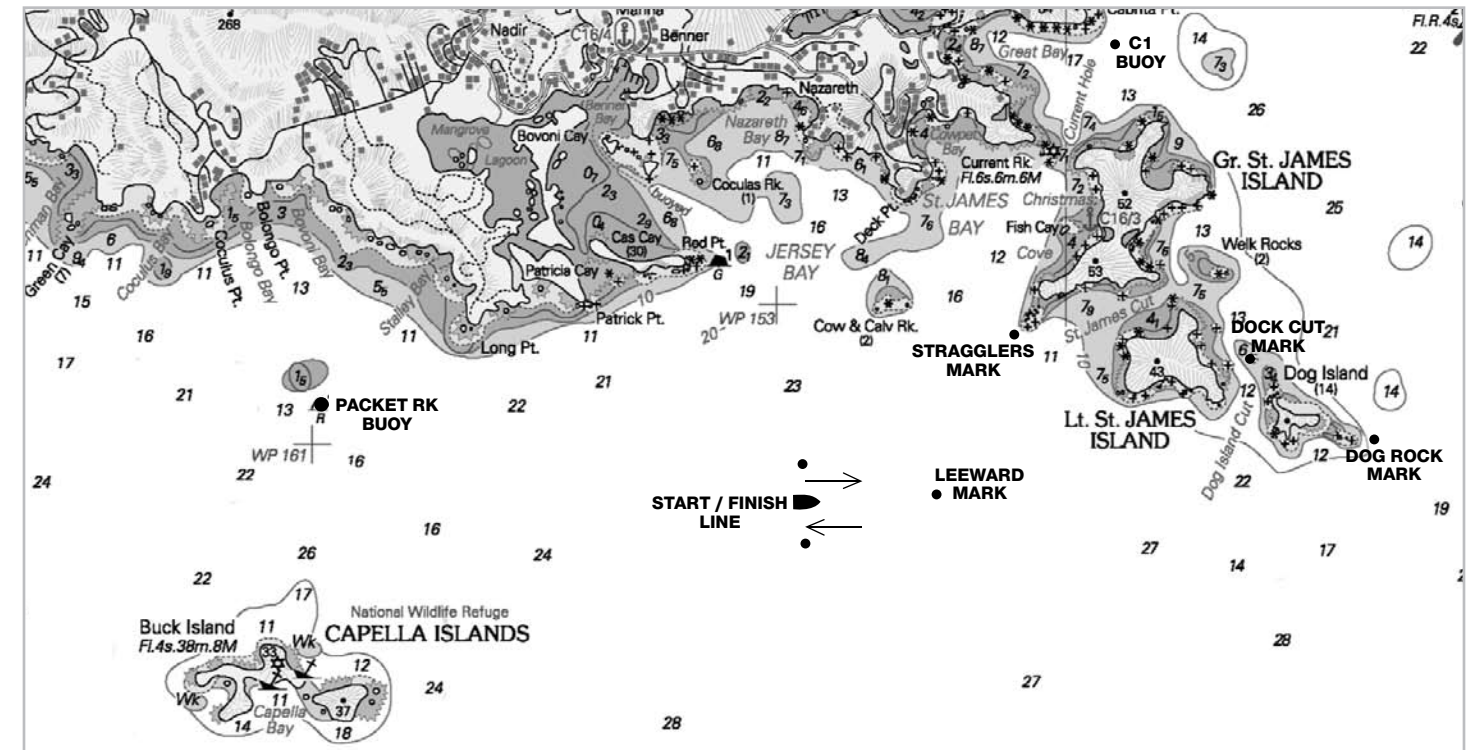


► **BI-2 Buck Island Course 2** (18.5 nm)

Jersey Bay Circle starting area  
 Start between the staff displaying an orange flag on the Race Committee Signal Boat and nearby inflatable mark.  
 Leaving Stragglers buoy to Port, proceed to Dog Rock Mark leaving it to Port.  
 Proceed to Two Brothers Island, leaving it to Port. Leaving Current Cut Rock to Starboard, proceed through Current Cut to Buck & Capella Islands leaving them to Starboard.  
 Leaving Packet Rock buoy to Port, and Cow and Calf Rocks to Port, proceed to Finish in Cowpet Bay.



► **DOG ISLAND DETAIL**



► **D-1 Dog Island Course 1** (approx. 16.5 nm)

Cow & Calf starting area (approx. 0.75nm S of Cow & Calf Rocks)  
 Start between the staff displaying an orange flag on the Port Side of the Race Committee Signal Boat and a nearby inflatable mark. Refer to Dog Island Detail.  
 Proceed thru Dog Island Cut, leaving Dog Island Cut Mark to Starboard.  
 Leave Dog Rock Mark to Starboard.  
 Proceed to Buck & Capella Islands, leaving them to Starboard.  
 Proceed thru Dog Island Cut, leaving Dog Cut Mark to Starboard.  
 Leave Dog Rock Mark to Starboard.  
 Proceed to finish.

► **D-2 Dog Island Course 2** (approx. 11.25 nm)

Cow & Calf starting area (approx. 0.75nm S of Cow & Calf Rocks)  
 Start between the staff displaying an orange flag on the Port Side of the Race Committee Signal Boat and a nearby inflatable mark. Refer to Dog Island Detail.  
 Proceed thru Dog Island Cut, leaving Dog Cut Mark to Starboard.  
 Leave Dog Rock Mark to Starboard.  
 Proceed to Buck & Capella Islands, leaving them to Starboard.  
 Proceed to finish.

► **D-3 Dog Island Course 4** (approx. 14.5 nm)

Cow & Calf starting area (approx. 0.75nm S of Cow & Calf Rocks)  
 Start between the staff displaying an orange flag on the Port Side of the Race Committee Signal Boat and a nearby inflatable mark. Refer to Dog Island Detail.  
 Proceed thru Dog Island Cut, leaving Dog Island Cut Mark to Starboard.  
 Leave Dog Rock Mark to Starboard.  
 Proceed to Packet Rock buoy, leaving it to Port.  
 Proceed thru Dog Island Cut, leaving Dog Island Cut Mark to Starboard.  
 Leave Dog Rock Mark to Starboard.  
 Proceed to finish.

► **D-4 Dog Island Course 4** (approx. 9.5nm)

Cow & Calf starting area (approx. 0.75nm S of Cow & Calf Rocks)  
 Start between the staff displaying an orange flag on the Port Side of the Race Committee Signal Boat and a nearby inflatable mark. Refer to Dog Island Detail.  
 Proceed thru Dog Island Cut, leaving Dog Cut Mark to Starboard.  
 Leave Dog Rock Mark to Starboard.  
 Proceed to Packet Rock buoy Islands, leaving it to Port.  
 Proceed to finish.

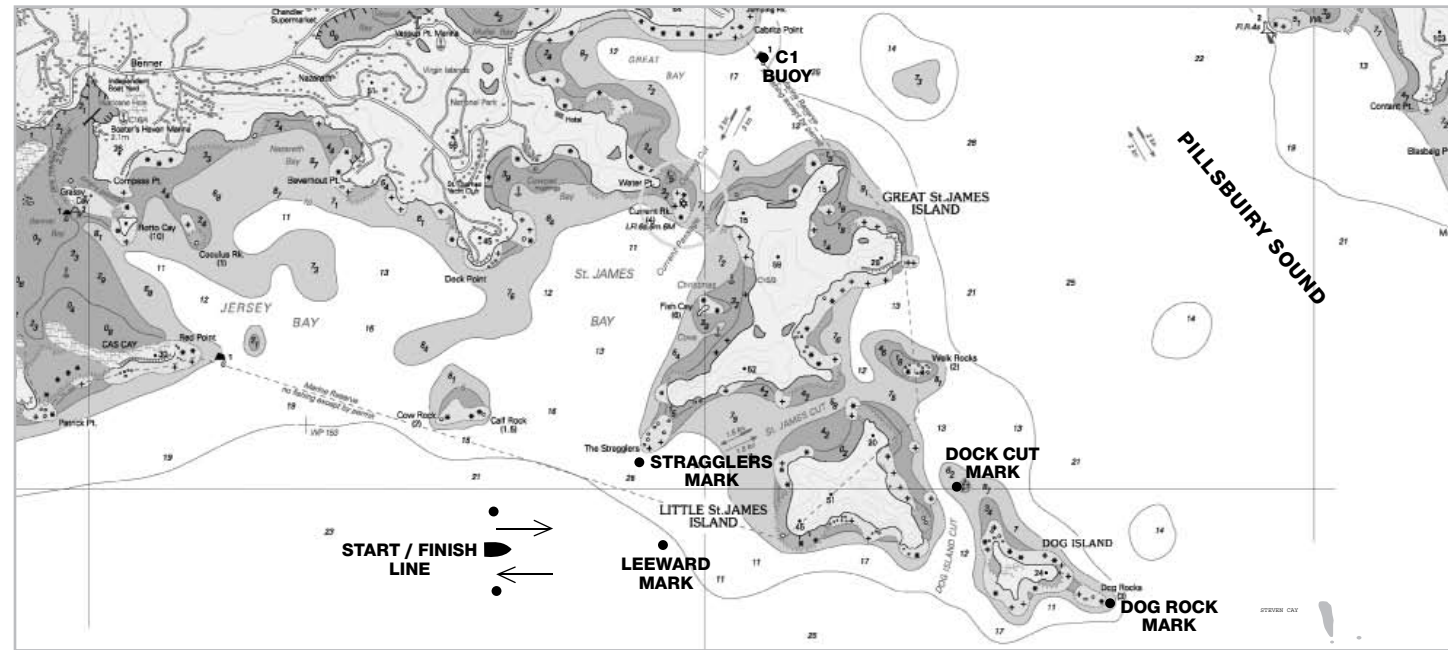
► **D-5 Dog Island Course 5** (approx. 8.5nm)

Cow & Calf starting area (approx. 0.5nm S of Cow & Calf Rocks)  
 Start between the staff displaying an orange flag on the Port Side of the Race Committee Signal Boat and a nearby inflatable mark. Refer to St. James Island Detail.  
 Proceed to Dog Rock Mark, leaving it to Port.  
 Proceed to C1 (Green Can off Cabrita Point), leaving it to Port.  
 Proceed to Dog Rock Mark, leaving it to Starboard.  
 Proceed to finish.

► **D-6 Dog Island Course 6** (approx. 9.5nm)

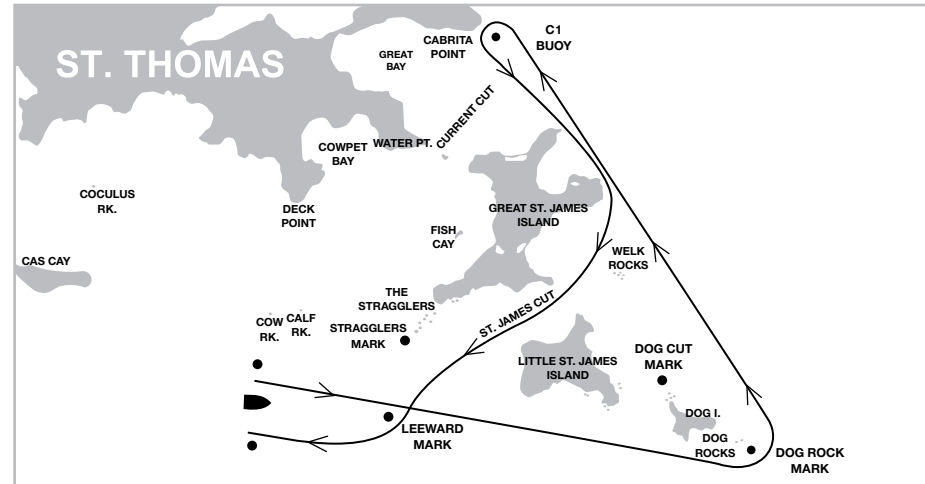
Cow & Calf starting area (approx. 0.75nm S of Cow & Calf Rocks)  
 Start between the staff displaying an orange flag on the Port Side of the Race Committee Signal Boat and a nearby inflatable mark. Refer to St. James Island Detail.  
 Proceed thru Dog Is Cut  
 Leave Dog Rock Mark to Starboard  
 Leave Leeward Mark to Port  
 Proceed thru Dog Cut  
 Leave Dog Rock Mark to Starboard  
 Leaving Leeward mark to Starboard, proceed to finish.

► **ST. JAMES ISLAND DETAIL**



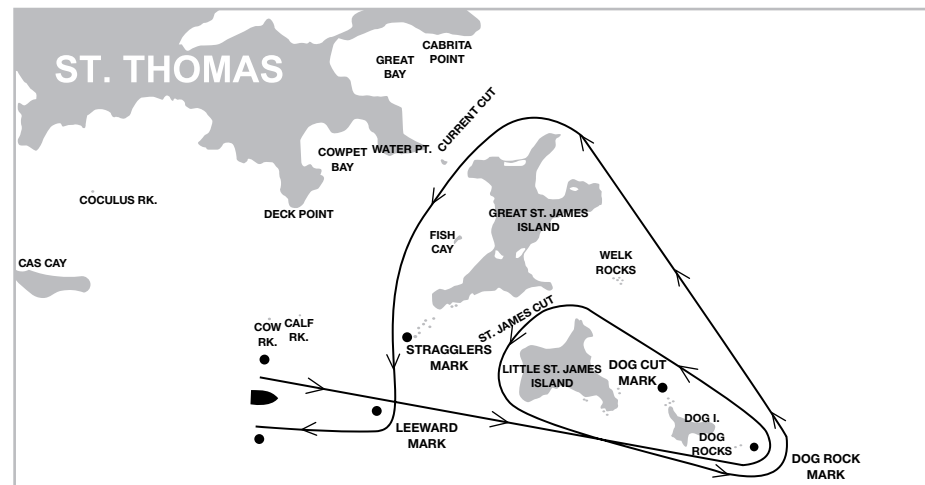
► **SJ-1 St. James Island Course 1** (approx. 6.8 nm)

Cow & Calf starting area (approx. 0.5nm S of Cow & Calf Rocks)  
 Start between the staff displaying an orange flag on the Port Side of the Race Committee Signal Boat and a nearby inflatable mark. Refer to St. James Island Detail.  
 Proceed to Dog Rock Mark, leaving it to Port.  
 Proceed to C1 (Green Can off Cabrita Point), leaving it to Port.  
 Leaving Great St. James Island to Starboard, proceed thru St. James Cut.  
 Leave Leeward Mark to Starboard.  
 Proceed to finish.



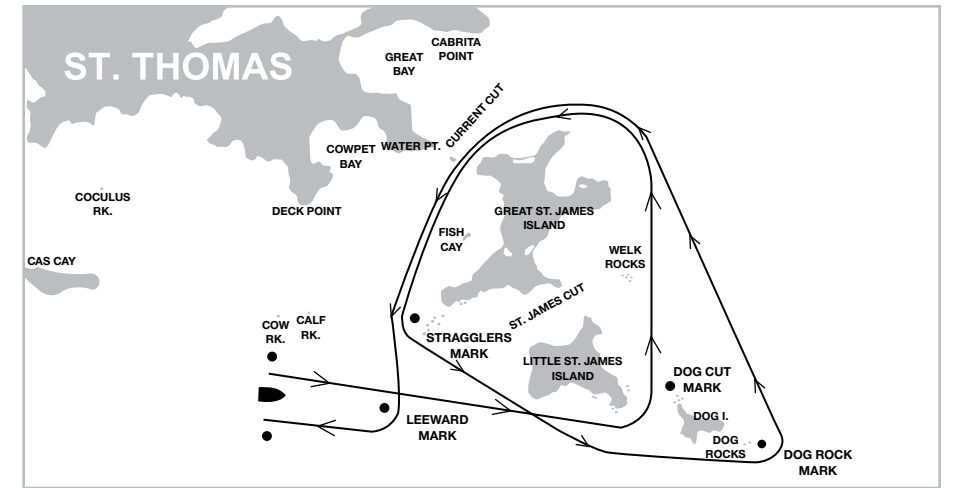
► **SJ-2 St. James Island Course 2** (approx. 8.5 nm)

Cow & Calf starting area (approx. 0.5nm S of Cow & Calf Rocks)  
 Start between the staff displaying an orange flag on the Port Side of the Race Committee Signal Boat and a nearby inflatable mark. Refer to St. James Island Detail.  
 Proceed to Dog Rock Mark, leaving it to Port.  
 Leaving Little St. James Island to Port, proceed thru St. James Cut, and return to Dog Rock Mark, leaving it to Port.  
 Leaving Great St. James to Port, proceed to Current Cut.  
 Leaving Current Cut Rock to Starboard, proceed to Stragglers Mark, leaving it to Port.  
 Leave Leeward Mark to Starboard.  
 Proceed to finish.



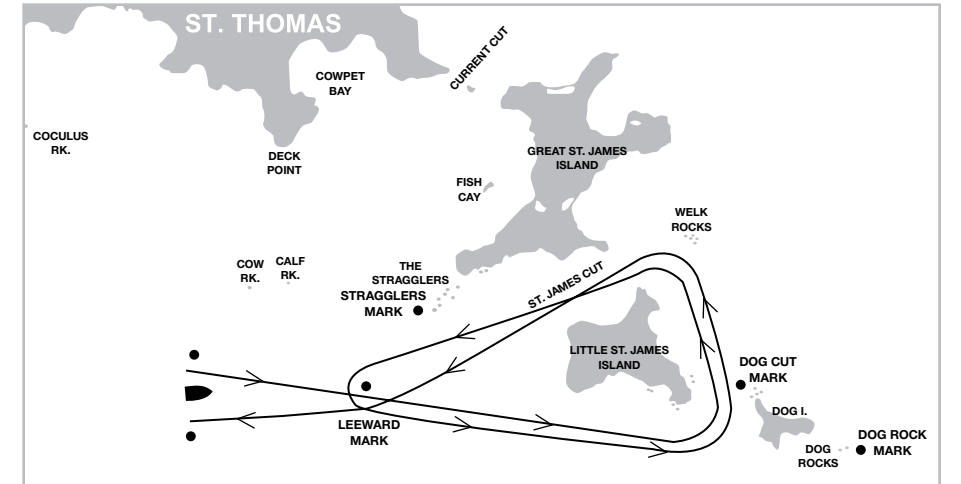
► **SJ-3 St. James Island Course 3** (approx. 9 nm)

Cow & Calf starting area (approx. 0.5nm S of Cow & Calf Rocks)  
**NOTE: Boats not Starting or Finishing a race shall not cross the start-finish line.**  
 Start between the staff displaying an orange flag on the Port Side of the Race Committee Signal Boat and a nearby inflatable mark. Refer to St. James Island Detail.  
 Proceed thru Dog Island Cut, leaving Dog Cut Mark to Starboard.  
 Leaving Great St. James to Port, proceed to Current Cut.  
 Leaving Current Cut Rock to Starboard, proceed to Stragglers Mark, leaving it to Port.  
 Proceed to Dog Rock Mark, leaving it to Port.  
 Leaving Great St. James to Port, proceed to Current Cut.  
 Leaving Current Cut Rock to Starboard, proceed to Stragglers Mark leaving it to Port.  
 Proceed to Leeward Mark leaving it to Starboard.  
 Proceed to finish.



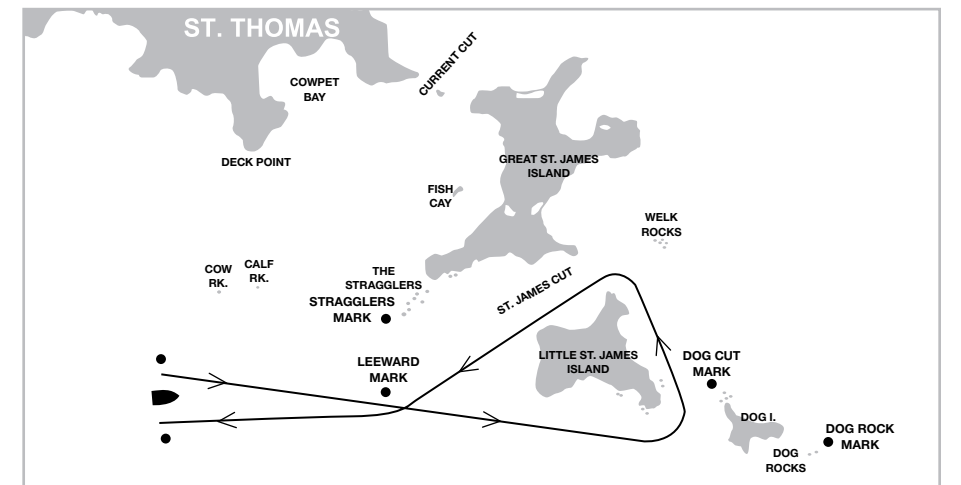
► **SJ-4 St. James Course 4** (approx. 7 nm)

Cow & Calf starting area (approx. 0.75nm S of Cow & Calf Rocks)  
**NOTE: Boats not Starting or Finishing a race shall not cross the start-finish line.**  
 Start between the staff displaying an orange flag on the Port Side of the Race Committee Signal Boat and a nearby inflatable mark. Refer to Dog Island Detail.  
 Proceed thru Dog Island Cut, leaving Dog Island Cut Mark to Starboard.  
 Proceed thru St. James Cut.  
 Proceed to Leeward Mark leaving it to Port.  
 Proceed thru Dog Island Cut, leaving Dog Island Cut Mark to Starboard.  
 Proceed thru St. James Cut.  
 Proceed to Leeward Mark leaving it to Starboard.  
 Proceed to finish.



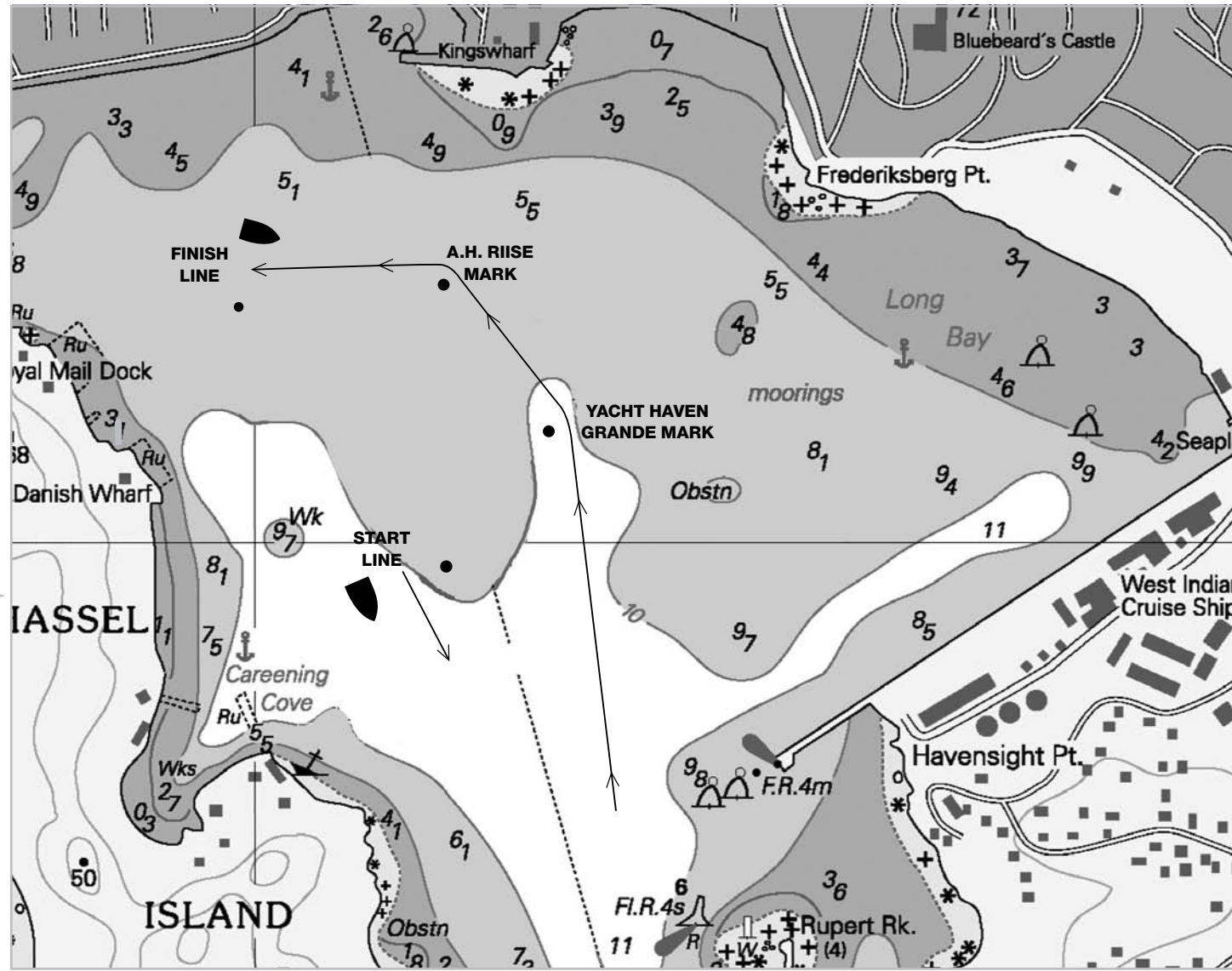
► **SJ-5 St. James Course 5** (approx. 3.5 nm)

Cow & Calf starting area (approx. 0.75nm S of Cow & Calf Rocks)  
**NOTE: Boats not Starting or Finishing a race shall not cross the start-finish line.**  
 Start between the staff displaying an orange flag on the Port Side of the Race Committee Signal Boat and a nearby inflatable mark. Refer to Dog Island Detail.  
 Proceed thru Dog Island Cut, leaving Dog Island Cut Mark to Starboard.  
 Proceed thru St. James Cut.  
 Proceed to Leeward Mark, leaving it to Starboard.  
 Proceed to finish.



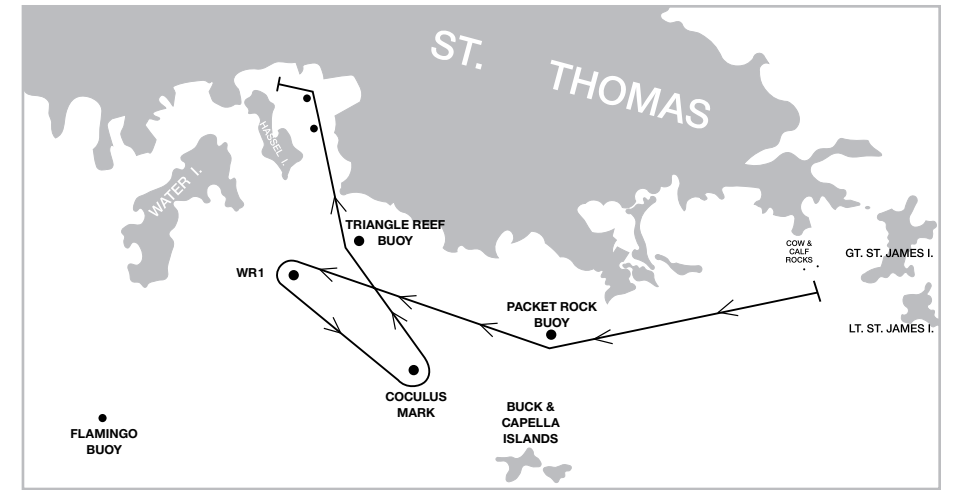


▶ CHARLOTTE AMALIE HARBOR DETAIL



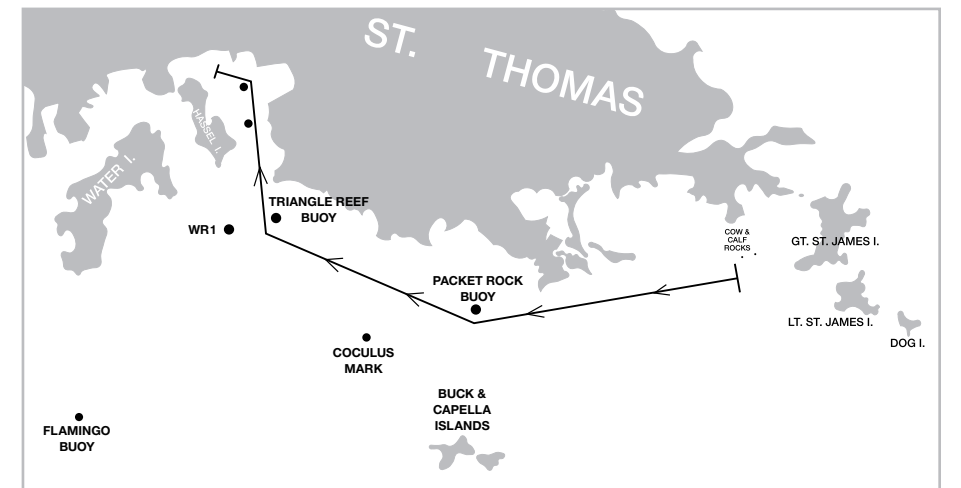
▶ SH-2 South Harbor Course 2 (11nm)

Cow & Calf starting area (approx. 0.5nm SE of Cow & Calf Rocks)  
 Start between the staff displaying an orange flag on the Race Committee Signal Boat and a nearby inflatable mark.  
 Leaving Packet Rock buoy to starboard, proceed to WR1 buoy leaving it to Port.  
 Proceed to Coculus Mark leaving it to Port.  
 Leaving Triangle Reef buoy to Starboard, proceed to Charlotte Amalie Harbor – Refer to Harbor Course Detail.  
 Proceed to Yacht Haven Grande inflatable mark leaving it to Port.  
 Proceed to A.H. Riise inflatable mark leaving it to Port.  
 Proceed to finish.



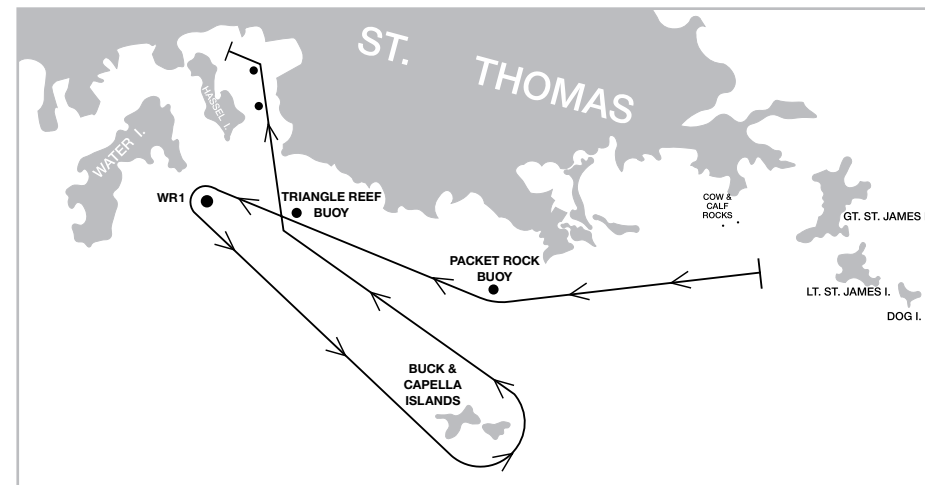
▶ SH-3 South Harbor Course 3 (6nm)

Cow & Calf starting area (approx. 0.5nm SE of Cow & Calf Rocks)  
 Start between the staff displaying an orange flag on the Race Committee Signal Boat and a nearby inflatable mark.  
 Leaving Packet Rock buoy and Triangle Reef buoy to Starboard, proceed to Charlotte Amalie Harbor.  
 Proceed to Yacht Haven Grande inflatable mark leaving it to Port – Refer to Harbor Course Detail.  
 Proceed to A.H. Riise inflatable mark leaving it to Port.  
 Proceed to finish.



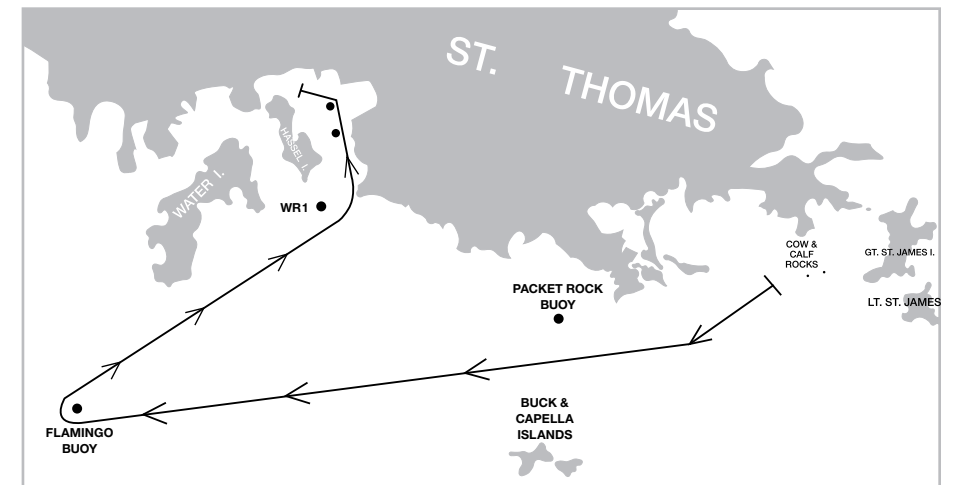
▶ SH-1 South Harbor Course 1 (16 nm)

Cow & Calf starting area (approx. 0.5nm SE of Cow & Calf Rocks)  
 Start between the staff displaying an orange flag on the Race Committee Signal Boat and a nearby inflatable mark.  
 Proceed to Packet Rock then to Triangle Reef buoys, leaving both to Starboard.  
 Proceed to WR1 buoy, leaving it to Port.  
 Proceed to Buck & Capella Islands, leaving both to Port.  
 Leaving Triangle Reef buoy and Packet Rock buoy to Starboard, proceed to the Charlotte Amalie Harbor.  
 Proceed to Yacht Haven Grande inflatable mark leaving it to Port – Refer to Harbor Course Detail.  
 Proceed to A.H. Riise inflatable mark leaving it to Port.  
 Proceed to finish.



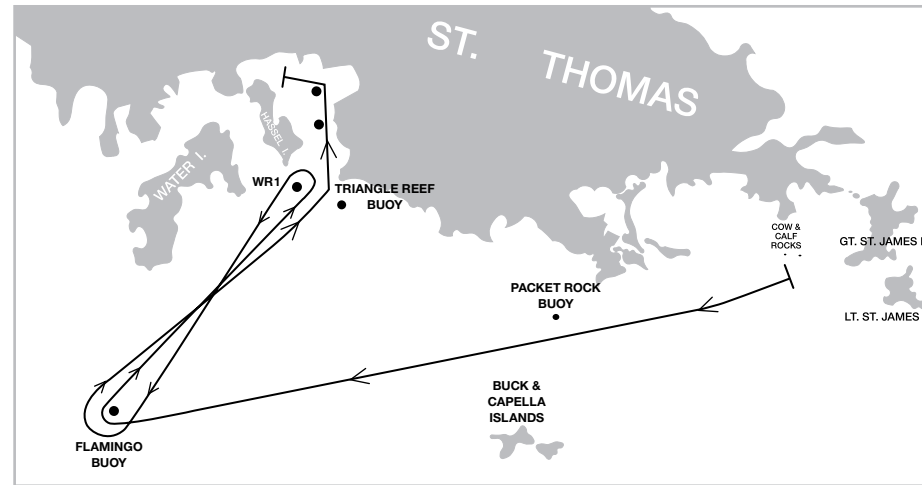
▶ NH-1 North Harbor Course 1 (11nm)

Cow & Calf starting area (approx. 0.5nm SE of Cow & Calf Rocks)  
 Start between the staff displaying an orange flag on the Race Committee Signal Boat and a nearby inflatable mark.  
 Leaving Packet Rock buoy to Starboard, proceed to Flamingo buoy leaving it to Starboard.  
 Leaving WR1 buoy to Port, proceed to Charlotte Amalie Harbor.  
 Proceed to Yacht Haven Grande inflatable mark leaving it to Port – Refer to Harbor Course Detail.  
 Proceed to A.H. Riise inflatable mark leaving it to Port.  
 Proceed to finish.



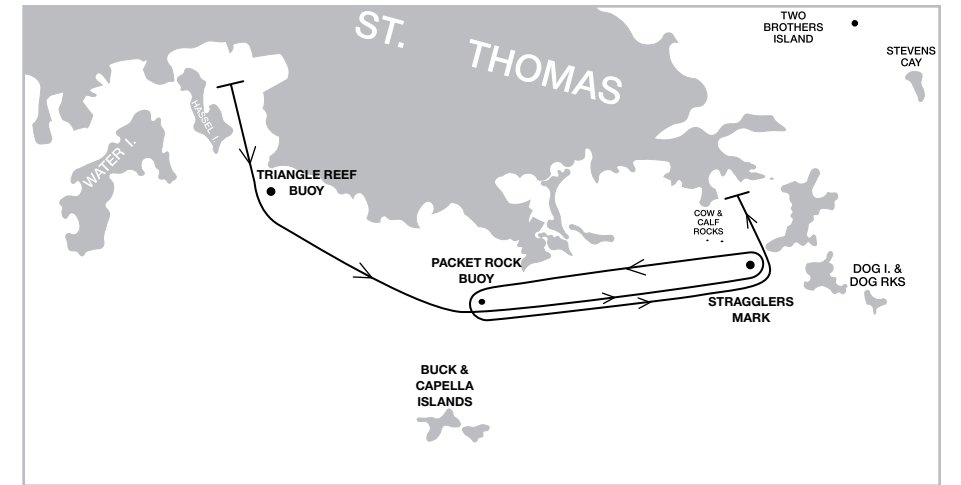
► **NH-2 North Harbor Course 2** (16 nm)

Cow & Calf starting area (aprox. 0.5nm SE of Cow & Calf Rocks)  
 Start between the staff displaying an orange flag on the Race Committee Signal Boat and a nearby inflatable mark.  
 Leaving Packet Rock buoy to Starboard, proceed to Flamingo buoy leaving it to Starboard.  
 Proceed to WR1 buoy, leaving it to Port.  
 Proceed to Flamingo buoy, leaving it to Starboard.  
 Leaving WR1 buoy to Port, proceed to Charlotte Amalie Harbor.  
 Proceed to Yacht Haven Grande inflatable mark leaving it to Port – Refer to Harbor Course Detail.  
 Proceed to AHRise inflatable mark leaving it to Port.  
 Proceed to finish.



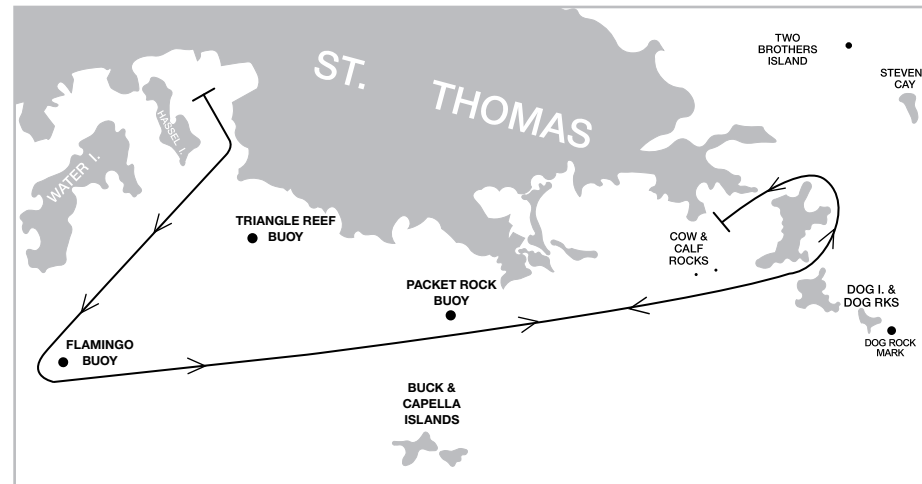
► **EC-1 East Cowpet Course 1** (13 nm)

Charlotte Amalie Harbor starting area  
 Start in the Charlotte Amalie Harbor between the staff displaying an orange flag on the Race Committee Signal Boat and a nearby inflatable mark.  
 Proceed to Triangle Reef buoy, leaving it to Port.  
 Leaving Packet Rock buoy to Port, proceed to Stragglers Mark, leaving it to Port.  
 Proceed to Packet Rock buoy, leaving it to Port.  
 Proceed to Stragglers Mark, leaving it to Port.  
 Proceed to finish in Cowpet Bay.



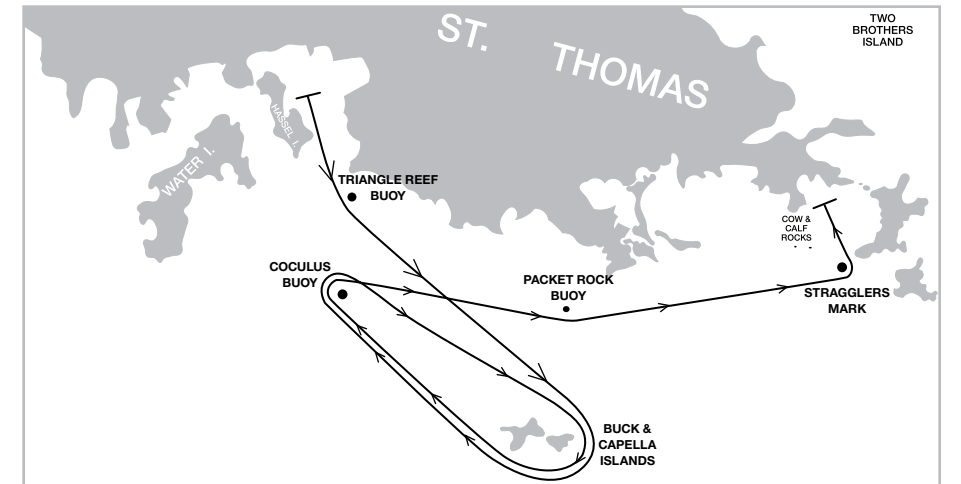
► **NC-1 North Cowpet Course 1** (13 nm)

Charlotte Amalie Harbor starting area  
 Start in the Charlotte Amalie Harbor between the staff displaying an orange flag on the Race Committee Signal Boat and a nearby inflatable mark.  
 Proceed to Flamingo buoy, leaving it to Port.  
 Leave Packet Rock buoy to Port, proceed thru St. James cut.  
 Leaving Great St. James Island to Port, proceed to Current Cut.  
 Leaving Current Cut Rock to Starboard, proceed to finish in Cowpet Bay.



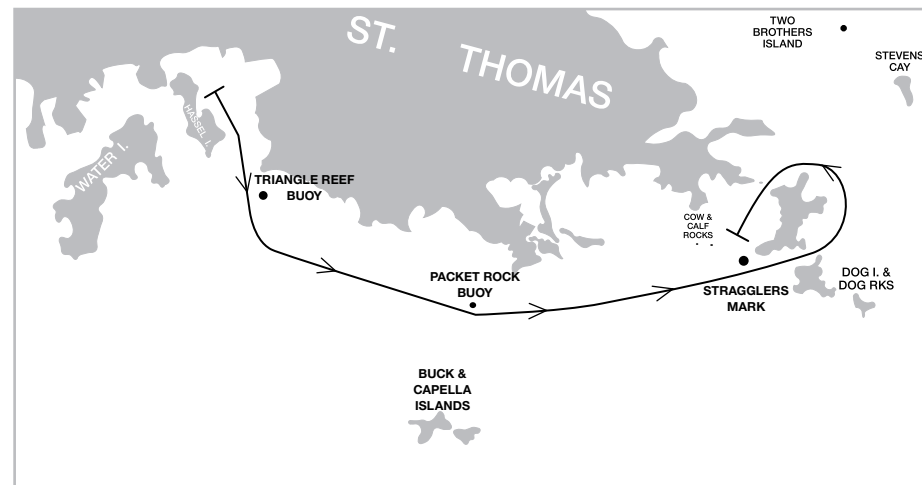
► **SC-1 South Cowpet Course 1** (18 nm)

Charlotte Amalie Harbor starting area  
 Start in the Charlotte Amalie Harbor between the staff displaying an orange flag on the Race Committee Signal Boat and a nearby inflatable mark.  
 Leaving Triangle Reef buoy to Port, proceed to Buck & Capella Islands, leaving them to Starboard.  
 Proceed to Coculus Mark, leaving it to Starboard.  
 Return to Buck & Capella Islands, leaving them to Starboard.  
 Return to Coculus Mark leaving it to Starboard.  
 Leaving Packet Rock buoy to port, proceed to Stragglers Mark, leaving it to Port.  
 Proceed to the Finish in Cowpet Bay.



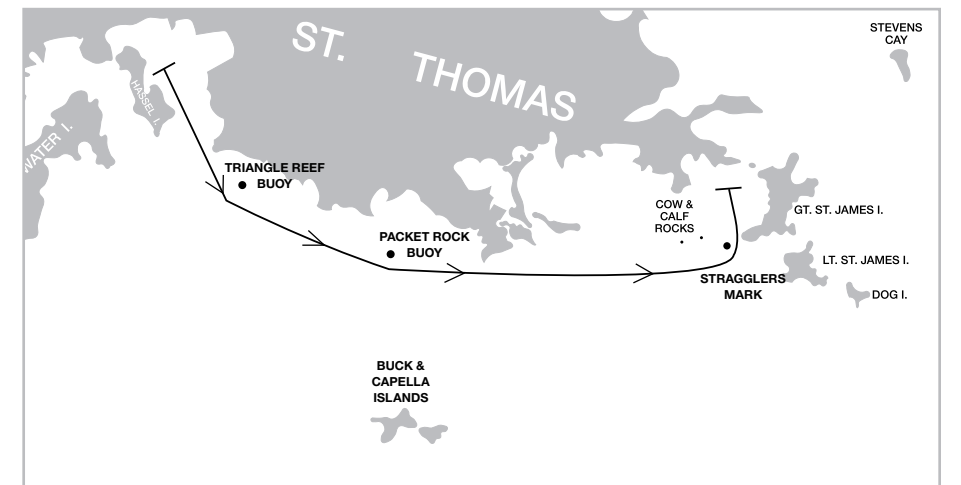
► **NC-2 North Cowpet Course 2** (9 nm)

Charlotte Amalie Harbor starting area  
 Start in the Charlotte Amalie Harbor between the staff displaying an orange flag on the Race Committee Signal Boat and a nearby inflatable mark.  
 Proceed to Triangle Reef buoy, leaving it to Port.  
 Leave Packet Rock buoy to Port and Stragglers Mark to Port, proceed thru St. James Cut.  
 Leaving Great St. James Island to Port, proceed to Current Cut.  
 Leaving Current Cut Rock to Starboard, proceed to finish in Cowpet Bay.



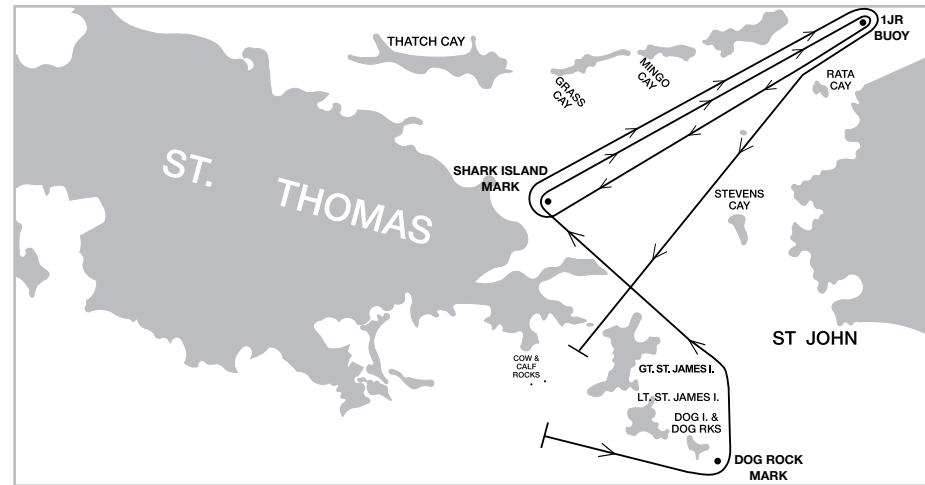
► **SC-2 South Cowpet Course 2** (12 nm)

Charlotte Amalie Harbor starting area  
 Start in the Charlotte Amalie Harbor between the staff displaying an orange flag on the Race Committee Signal Boat and a nearby inflatable mark.  
 Leave Triangle Reef buoy and Packet Rock buoy to Port.  
 Proceed to Stragglers Mark, leaving it to Port.  
 Proceed to Finish in Cowpet Bay.



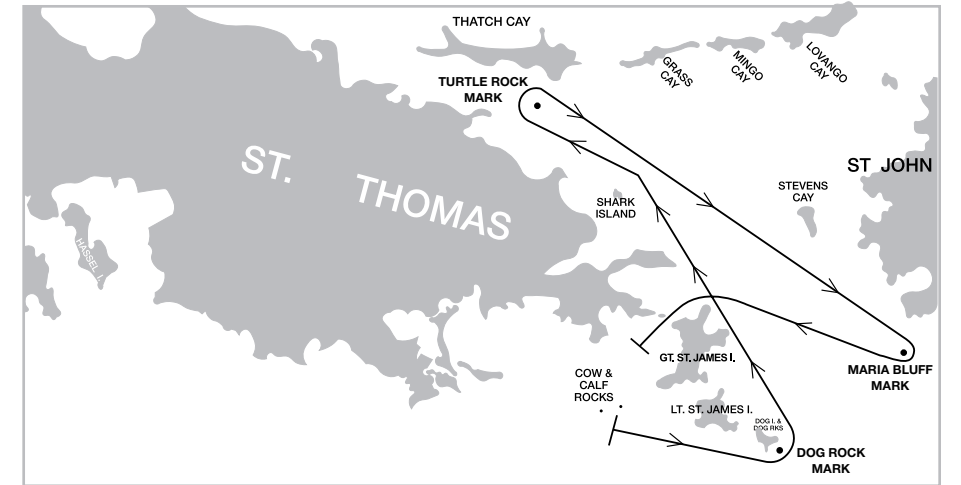
► **NP-1 North Pillsbury Course 1** (23 nm)

Cow & Calf starting area (aprox. 0.5nm SE of Cow & Calf Rocks)  
 Start between the staff displaying an orange flag on the Race Committee Signal Boat and a nearby inflatable mark.  
 Proceed to Dog Rock Mark, leaving it to Port.  
 Proceed to Shark Island Mark, leaving it to Starboard.  
 Proceed to 1JR buoy (North of Johnson's Reef), leaving it to Starboard.  
 Leaving Rata Cay and Stevens Cay to Port, proceed to Shark Island Mark, leaving it to Starboard.  
 Return to 1JR, leaving it to Starboard.  
 Leaving Rata Cay and Stevens Cay to Port proceed to Current Cut.  
 Leaving Current Cut Rock to Starboard, proceed to Finish in Cowpet Bay.



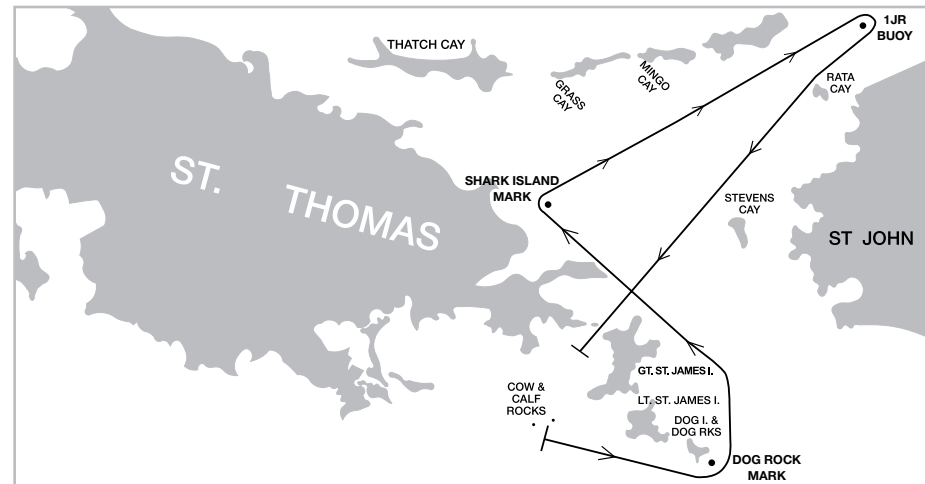
► **SP-2 South Pillsbury Course 2** (13.5 nm)

Cow & Calf starting area (aprox. 0.5nm SE of Cow & Calf Rocks)  
 Start between the staff displaying an orange flag on the Race Committee Signal Boat and a nearby inflatable mark.  
 Proceed to Dog Rock Mark, leaving it to Port.  
 Proceed to Shark Island, leaving it to Port.  
 Proceed to Turtle Rock Mark, leaving it to Starboard.  
 Leaving Shark Is. Rock to Starboard, proceed to Maria Bluff Mark, leaving it to Starboard.  
 Proceed to Current Cut.  
 Leaving Current Cut Rock to Starboard, proceed to Finish in Cowpet Bay.



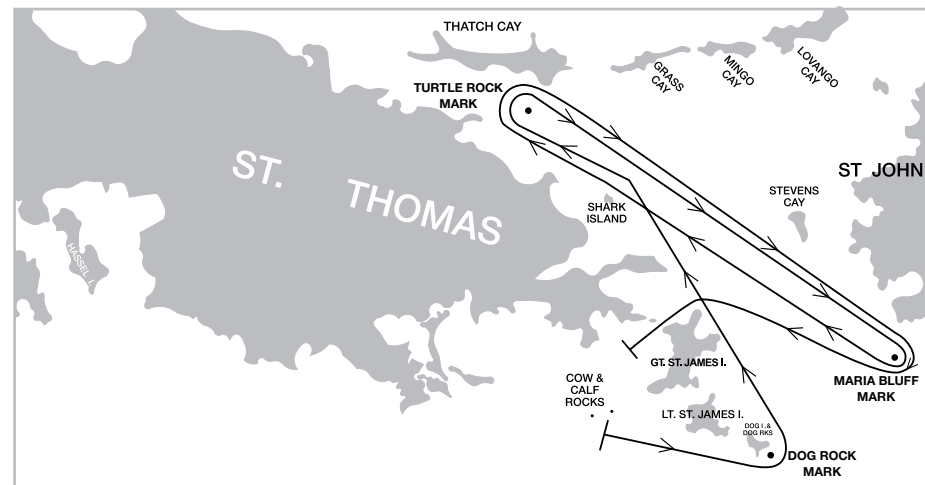
► **NP-2 North Pillsbury Course 2** (14 nm)

Cow & Calf starting area (aprox. 0.5nm SE of Cow & Calf Rocks)  
 Start between the staff displaying an orange flag on the Race Committee Signal Boat and a nearby inflatable mark.  
 Proceed to Dog Rock Mark, leaving it to Port.  
 Proceed to Shark Island Mark, leaving it to Starboard.  
 Proceed to 1JR buoy (North of Johnson's Reef), leaving it to Starboard.  
 Leaving Rata Cay and Stevens Cay to port proceed to Current Cut.  
 Leaving Current Cut Rock to Starboard, proceed to Finish in Cowpet Bay.



► **SP-1 South Pillsbury Course 1** (17.5 nm)

Cow & Calf starting area (aprox. 0.5nm SE of Cow & Calf Rocks)  
 Start between the staff displaying an orange flag on the Race Committee Signal Boat and a nearby inflatable mark.  
 Proceed to Dog Rock Mark, leaving it to Port.  
 Proceed to Shark Is. Mark, leaving it to Port.  
 Proceed to Turtle Rock Mark, leaving it to Starboard.  
 Leaving Shark Is. Mark to Starboard, proceed to Maria Bluff Mark, leaving it to Starboard.  
 Leaving Shark Is. Mark to Port, return to Turtle Rock Mark, leaving it to Starboard.  
 Leaving Shark Is. Mark to Starboard, return to Maria Bluff Mark, leaving it to Starboard.  
 Proceed to Current Cut.  
 Leaving Current Cut Rock to Starboard, proceed to the Finish in Cowpet Bay.







**ST. THOMAS YACHT CLUB**  
**6224 Estate Nazareth 8-58**  
**St. Thomas**  
**U.S.V.I. 00802-1104**

**Tel: +1(340) 775-6320**  
**Fax: +1(340) 775-4701**  
**Email: [directors@rolexcupregatta.com](mailto:directors@rolexcupregatta.com)**  
**[www.rolexcupregatta.com](http://www.rolexcupregatta.com)**